

Fort Atkinson's Own Salty Earth Pictures

Presents

The story of Lucy's journey to recapture the Holiday Spirit combined with a sprinkling of white sparkly magic will surely capture your heart.

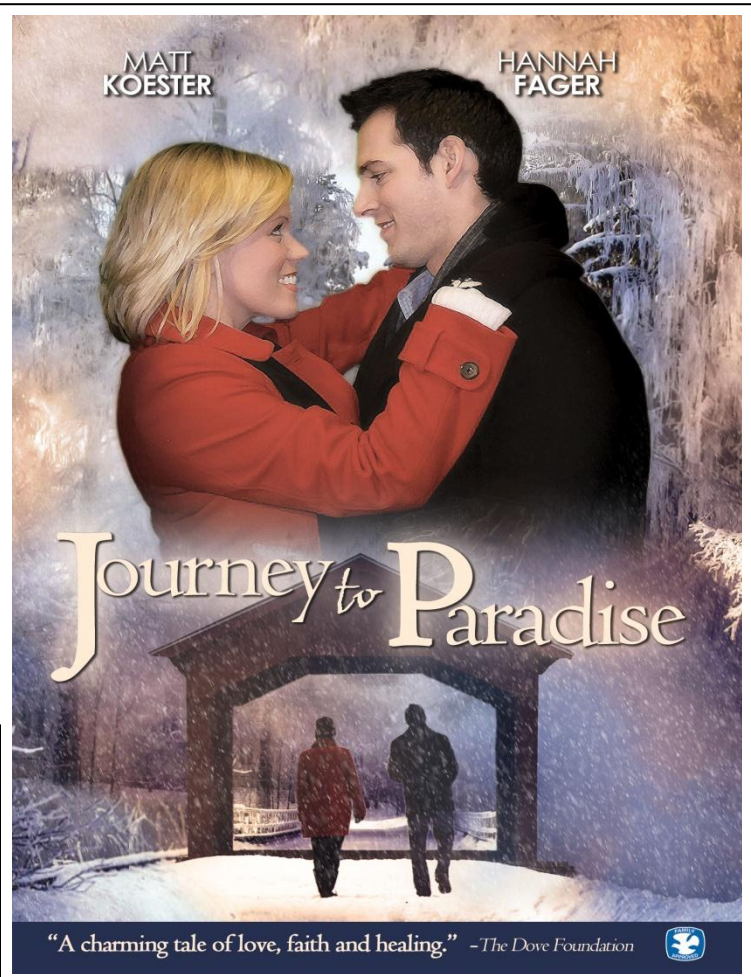
It will remain a Christmas favorite knowing that it was filmed here and is from the heart and soul of Fort Atkinson

Tuesday, December 13, 2011

**At Fort Atkinson High School
925 Lexington Blvd, Fort Atkinson,
(920) 563-7811**

5:30pm, Doors open

6:30 pm Welcome by Salty Earth



Tickets are \$7 - Students, \$10 - Adult
and are available at Blodgett Garden Center,
Humphrey Floral,
Sentry Food Store
and Tuttle's Pharmacy
(Cash or Check only please)

Reception with Silent Auction, Raffle and Refreshments

Cash or Check only please

Proceeds to benefit Victim Services at PADA, Jefferson County

For more information about PADA (People Against Domestic & Sexual Abuse) of Jefferson County, our mission to provide advocacy and options to victims of domestic and sexual abuse, please go to

Padajc.org